



Come worship with us at 10:00 a.m. each Sunday!



Everything In Between

I may not have been a huge fan of the language arts growing up, but there is one lesson from middle school creative writing that I still remember: oxymorons. Oxymorons are words or phrases that, out of context or when considered literally, are self-contradictory, but for one reason or another,



everything [in] between

are helpfully descriptive for a particular setting. Some examples

might include: plastic glassware; the sound of silence; jumbo shrimp; or civil war. There are just so many situations in this life where the only way to describe something is to use conflicting descriptions. Why is this? The simple answer is because, as much as we would prefer that the world be easily sliced and diced into two piles—right and wrong; black and white; good or evil—there is very little in life that can actually be split in this way.

Jesus himself lifted up the grey-ness of this world by bending the rules between the black and white dichotomy that everyone assumed the world held. He told a story about a Good Samaritan—certainly an oxymoron amongst the Hebrew people of his day—and went out of his way to share a meal (“good”) with Zaccheus, a man of little physical and even less social stature (“bad”). Jesus cursed a fruitless fig tree, told a story about a shepherd abandoning 99 sheep in search of just 1 lost sheep, and generally thrived in forcing people to reflect on situations that were always in that middle ground between the black-and-white society had imposed upon them. Is there a purpose for his hovering around these social lines drawn in the sand?

Continued on Page 2

Our “New” Parish Associate: Welcome, Pastor Liz!

Last year, IPC made the difficult but necessary decision to downsize our pastoral staff from two full-time pastors to one “called-and-installed, full-time” pastor upon the completion of Rev. Maureen Wilson’s contract as the Designated Associate Pastor in February 2024. Pastor Mo’s gifts for ministry in Irvington fit several other needs we have at IPC, and so she was hired as a part-time staff member. Roughly 20% of her position includes pastoral care and worship activities. That still leaves quite a bit of work for Pastor Jon to cover on his own. That is where the Parish Associate comes to the rescue! We have



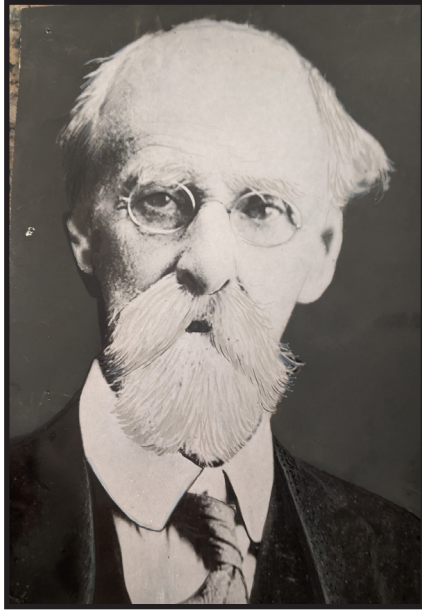
been blessed to have Rev. Bob McAulay supporting IPC as a Parish Associate: doing pastoral visits, helping with worship, and consulting with staff and Session on a host of subjects. In January 2025, Pastor Jon and Session decided that having one parish associate has been great, so having two must be better! They invited

another Parish Associate to the staff, extending the invitation to someone most of us know quite well! In January, the Rev. Liz Kaznak-Hall accepted our invitation to serve as a Parish Associate. This means that Liz is amongst the team of outstanding pastoral leaders of IPC who are available to support the leaders and members of our congregation. You may see Pastor Liz in the pulpit or lectern on Sundays, making some pastoral calls, perhaps dropping in on a meeting you may be attending, or in the pew nearby during worship services. Whenever you do see her next, make sure to say hello and (re)introduce yourself! Welcome (back!), Pastor Liz! We’re honored to have you joining in the life of our church!

From the Archives...

The Little Brick Church

Have you seen the original art of the Little Brick Church in the Welcome Center? It was created by Irvington artist Roger Frey and was presented to Irvington Presbyterian Church by the Weesner family in December, 1993.



Bennajah U. Weesner was the architect of the little brick church which opened in 1908 on this very lot where our current church stands. Architect Weesner designed several churches throughout the state. Here in Irvington, he refused payment for his work, and when the Trustees insisted on at least a partial fee, he accepted and turned it back to the church for the building fund!

The painting by Roger Frey was given to IPC in memory of Architect Weesner by his great-grandchildren, and in honor of their parents Walker J. Weesner and Ida Mell Weesner. This gift of art had the following stipulation:

This presentation was done with the following understanding.

This painting is on indefinite loan to Irvington Presbyterian

Church with the understanding and agreement that if the painting is no longer to be displayed that it will be returned to the family. Names of the grandchildren are on file in the church office. (Ms. Kathryn Miller Paternoster, Connecticut; Mrs. Melinda Miller Clark, Indiana; J. Bruce Miller, Indiana; Jay K. Miller, Indiana.)

By.....Frank Hurdis and Sheri Patterson
(IPC history geeks)



Continued from Page 1

This year, for Lent, as we are in this season that is not quite Easter, and yet certainly not ordinary, we will



explore some of these liminal spaces that Jesus sits in, as portrayed in the book of Luke. We will consider Intent versus Action; stranger and neighbor; lost and found; among others. We will explore the complexity of life that dwells in those "in between" spaces where it feels like there should be nothing, but where God's presence can be sensed in powerful ways.

We will be accompanied on this journey by the work of A Sanctified Art, like in previous years. Their artistic interpretations of each week's themes will help us grasp an even better understanding of God's presence in the undefined middle spaces of life, whether amidst the shades of gray, or hiding between the colors of each band of a rainbow.

Eager to explore the "not yet," the "not quite," and the "both-and" with you,

Dear IPCers,

I hope this message finds you well and thriving in faith. I want to highlight a wonderful resource in our community: The Center for Congregations. Many of you may already know how their workshops and grants have supported IPC in the past, but I want to share a bit more about what they offer and why I think it's so important for us to take advantage of these resources.



Center for Congregations

Free Workshops and Educational

Resources--The Center for Congregations provides a wide range of learning experiences, including in-person workshops, virtual sessions, and on-demand courses, at no cost. These opportunities are led by industry experts who understand the unique needs and challenges that congregations face. Whether you're looking for practical strategies to improve church operations, resources to enhance children's ministry, or guidance in leadership and spiritual development, you'll find something that speaks to our needs. I encourage all of you to explore these free workshops and sign up for any that piques your interest!

Here is their website where you can find more information: <https://centerforcongregations.org>

Marianne



A VERY HAPPY 100th BIRTHDAY to Annetta Huffman.

A VERY HAPPY 90th BIRTHDAY to Anne Moore.

IN MEMORIAM
We extend Christian sympathy to the family of Carolyn Searight.

Living
In
Fellowship
Together

CREATING DIAMOND ART WITH TJ

Monday, March 17th

Have you heard about Diamond Art and would like to learn more. TJ Hengst will be leading us as we create Diamond Art Magnets. We will gather on Monday, March 17th at 6:30pm in the parlor. All crafting materials will be supplied.

Women of all ages are welcome and please feel free to invite a friend to join us. Mark this date on your calendar for a fun evening of fellowship together. Please bring a snack or beverage to share. We will be collecting feminine hygiene products for Westminster. Please contact TJ Hengst (317-341-2921) if you have any questions and please RSVP so TJ has a count for the supplies needed.



Crocheting with Erika

CHRISTIAN SYMPATHY

We extend Christian sympathy to the family of Larry Sipe who passed away at home on Wednesday evening. Service details are pending.

Carol and her children and extended family covet your prayers as they grieve his passing and prepare to celebrate the long and full life he lived.

MEN'S BIBLE STUDY

The Men's Bible Study meets the 1st and 3rd Wednesday of each month in the parlor at 10 a.m. If you would like to know more about this group, please contact Steve Payne. All are welcome.

WOMEN'S BIBLE STUDY

Please join us the 3rd Thursday of each month at 10:30 a.m. in the Parlor for the Women's Bible Study. This Bible study is led by Rev. Wilson. All are welcome!



Irvington Presbyterian Church Justice Advocates

Your Justice Advocacy Team has heard your concerns about how to learn more about current state legislative work. It can be overwhelming and difficult to stay current and informed. Visit the Justice Advocacy tab on the IPC website to find links that will help navigate this important information.

Mission Committee

IPC is one of four churches that supports the Irvington Community Advocacy Network, commonly known as ICAN. To further IPC's support of ICAN, the Mission Committee is beginning a new process of collecting non-perishable foods and/or toiletries for the ICAN Pantry. This collection will take place every 3rd Sunday of the month, beginning March 16th. Congregants are encouraged to bring any number of items with them to the sanctuary that day. Your donations will be collected by the children during the Children's Time of the service and then delivered to ICAN by a Mission Committee member. Thank you for participating in this on-going collection which will be shared with those in need in the Irvington area.



ICAN

IRVINGTON COMMUNITY
ADVOCACY NETWORK

Items needed: canned goods, boxed goods, toothpaste, toilet paper, shampoo, conditioner, body soap, peanut butter (Expired food cannot be accepted.)

The Justice Advocacy Team is pleased to share the exciting events being promoted or held by the Irvington Branch Library.

In March, join Sampson Levingston (Through2Eyes Indiana) on a walking tour of Irvington to learn about some of the influential women who lived in the neighborhood. The tour will feature a special emphasis on the life and legacy of Madge Oberholtzer. There are three opportunities to participate in this event. Registration is required. You may access the registration links below:
<https://attend.indypl.org/events?n=60&l=Irvington+Branch&r=range&start=2025-03-15&end=2025-04-30>

Women's History Walking Tour of Irvington
Saturday, March 15: 1:30pm - 2:30pm

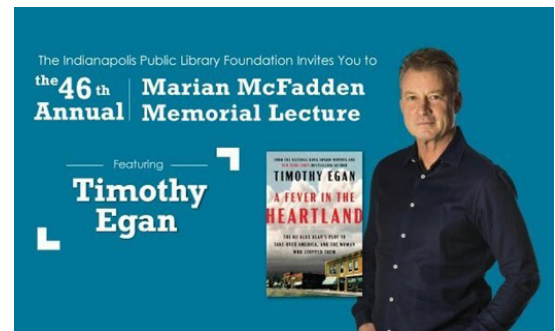
Women's History Walking Tour of Irvington
Wednesday, March 19: 10:30am - 11:30am

Women's History Walking Tour of Irvington
Saturday, March 29: 2:00pm - 3:00pm

UPCOMING OPPORTUNITIES

Timothy Egan is returning and will be featured at the Madam Walker Legacy Center on Thursday, March 20th at 7pm. Tickets are limited. The QR code will provide the details for this event. Thursday, March 20 at 7 p.m.

Madam Walker Legacy Center
617 Indiana Avenue | Indianapolis



In April, your Justice Advocacy Team will kick off the month with a road trip. The IPC bus has been reserved to travel to Butler University/Eidson-Duckwall Recital Hall on April 2nd to attend "A New View Film Series: Brother Outsider". This film chronicles the life of Bayard Rustin an important yet "unknown hero" of the civil rights movement. You may learn more about this event below. Registration is required for this FREE event. You must register using this QR code.



If you plan to ride the IPC bus, please contact the church office before March 26th to reserve your seat.

Brother Outsider chronicles the life and work of Bayard Rustin—a visionary strategist and activist who has been called "the unknown hero" of the civil rights movement. A disciple of Gandhi, a mentor to Martin Luther King Jr., and the architect of the 1963 March on Washington, Rustin dared to live as an out gay man during the fiercely homophobic 1940s, 1950s, and 1960s. Brother Outsider chronicles Rustin's activism for racial and economic justice, peace, and equality for LGBTQ Americans while illuminating why he has been erased from history.

A New View Film Series will journey outside everyday life to explore new worldviews through the screening of four films. The Series seeks to promote appreciation and foster respect for differences through the lenses of interfaith understanding, diversity, social justice, and belonging.

THIS PERFORMANCE IS FREE AND OPEN TO THE PUBLIC, NO TICKET IS REQUIRED.

Continuing in April, your Justice Advocacy Team was pleased to be asked to partner with the Irvington Branch Library. We will be providing refreshments for the following lectures and panel discussions. We hope you will participate in these exciting events.

Rooted in Resilience: Black Life in Indiana Thriving During the Klan Era

Saturday, April 05: 3:00pm - 4:00pm

Irvington Library

AGE GROUP: ADULTS

EVENT TYPE: LECTURE/PANEL DISCUSSION

Kisha Tandy, Curator of Social History at the Indiana State Museum, will shed light on the many ways in which Black families flourished in Indiana despite the influence of the Ku Klux Klan in the early 1900s.

Madge: The Life and Times of Madge Oberholtzer: Meet Author Charlotte Ottinger

Tuesday, April 22: 6:00pm - 7:00pm

Irvington Branch

AGE GROUP: ADULTS

EVENT TYPE: BOOK DISCUSSION AUTHOR VISIT

Meet Charlotte Ottinger, author of "Madge: The Life and Times of Madge Oberholtzer, the Young Irvington Woman Who Brought Down D.C. Stephenson and the Ku Klux Klan." Learn about the life and murder of this historic Indianapolis figure from her foremost biographer.

We hope you agree, lots of exciting opportunities are coming this spring. If you have any questions, please contact a member of the Justice Advocacy Team. Hope to see you there.

IAM and ICAN: ...Sure! But Who Is U?

In 1995, the Rev. Tim Colvin of Downey Avenue Christian Church and the Rev. Cobe Colwell of the Irvington Presbyterian Church submitted articles of incorporation to the state of Indiana for the creation of a non-profit organization called the Irvington Association of Ministers, Inc. (IAM). The purpose of IAM was to provide mutual support for the ministers and ministries who worked together to provide pastoral leadership to the Irvington community, collaborate on community worship, and further ecumenical growth within the neighborhood.

As the congregations of IAM continued to serve Irvington as a collection of individual congregations, there arose the desire to coordinate the responses the congregations offered to Irvington's neighbors with acute needs (e.g., those without housing, lacking food, at risk of losing utility service, etc.) so as to avoid the duplication of efforts and ensure the greatest impact was made in the neighborhood. From this was born the primary program of the IAM: the Irvington Churches Advocacy Network (a name that was kept until the early 2020s). Over the years, this program has grown, shifted, adapted, moved around, and seen different leaders involved. In 2024, the Irvington Community Advocacy Network (ICAN) supported over 1400 clients by providing clothing items, connections with social services and programs, accessing public transit, ensuring utility services remain active, bridging gaps in food security, and much, much more. ICAN's largest impact in the community is through the ICAN Food Pantry at Downey Avenue Christian Church: a food pantry for those living in the 46219 ZIP code. In 2024, the pantry—whose budget was roughly \$15,000—fed hundreds of hungry Irvington residents. This is in addition to the many others who received clothing from the ICAN Clothing Closet at Irvington United Methodist Church and other support from Briana, the Executive Director whose office is at IUMC.

IAM and ICAN have started 2025 with an eye on what is to come for our ministries and community. This began at our first meeting in January when we formally adopted new bylaws to recognize the different degrees of involvement many of our

neighboring congregations have in our work, and to prepare for the new leadership we will have. Fr. Frank Impicciche of St. Matthew's Episcopal Church concluded his term as President as he prepared to receive a call to serve a new church outside of Irvington, and Fr. Rick Ginther of Our Lady of Lourdes Catholic Parish concluded his term as Treasurer in anticipation of his upcoming retirement later in 2025. Rev. Melody Merida of Downey Avenue Christian Church and Rev. Dr. Jon Reinink of IPC were elected to fill those offices, respectively.

February marked another milestone for ICAN as we prepared for the departure of Brianna Owens, the Executive Director of ICAN. Under Brianna's leadership, ICAN expanded to serve more of our neighbors through her eager desire to build relationships and share about ICAN's work in the community beyond the walls of our supporting congregations. We are grateful for her work and celebrate her ongoing professional growth and development as she moves on to her new job. And while Brianna's departure brought some anxiety as to who might do the important work she has done, the IAM board was thrilled to find a candidate who we believe will bring skills and expertise that will help ICAN continue its work and think creatively and critically about how it can best serve those in need in our community while engaging our supporting congregations.

Speaking of supporting ICAN... Who IS ICAN these days? And how do we support ICAN—and how can we support its ministry more?

The supporting congregations of ICAN—that is, the key congregations providing lead financial support and whose clergy sit on the board—include Downey Avenue Christian Church, St Matthew's Episcopal Church, Our Lady of Lourdes Catholic Parish, Gethsemane Lutheran Church, Irvington United Methodist Church, and Irvington Presbyterian Church. The Associate Pastors of DACC and IPC are also key players in the board's work. Other supporters include Cornerstone Lutheran Churches, Linwood Christian Church, and the Rev. Martin Bornhoeft, a Lutheran pastor who lives in Irvington. *Continued on Page 11*

FEBRUARY SUNDAY SCHOOL RECAP

This month, our Sunday School explored powerful Scripture passages that remind us of God's deep love, empathetic presence, and the blessing God offers even in challenging times. Here's a brief look at our key teachings and a list of book recommendations you can enjoy together at home.

Scriptures & Key Ideas

1 Corinthians 13:1-13 – "True Love"

Key Idea: Love goes beyond words and emotions. It is patient, kind, humble, and steadfast. We emphasized that real love never gives up and always seeks the good of others.

Hebrews 2:14-18 – "The Ministry of Presence"

Key Idea: Jesus shared in human experiences, showing how simply "being there" can be a meaningful act of care. By noticing others, listening, and extending kindness, we mirror the example Jesus set.

Luke 6:17-26 – "Blessed Are You"

Key Idea: Jesus taught that those who feel sad, lonely, or hungry are still blessed, because God sees every need and remains close. True blessing is found in God's nearness and is reflected when we show compassion to those in need.

Book Recommendations

Love Is Kind by Laura Sassi

Demonstrates gentle ways to practice patient and caring love.

Love Does for Kids by Bob Goff

Stories that encourage children to live out love in fun, active ways.

The Invisible Boy by Trudy Ludwig

Shows how noticing and including others can transform lonely hearts.

Wonder by R.J. Palacio

Highlights empathy and kindness as powerful forces in friendship and community.

The Blessing Jar by Colleen Coble

Teaches children to recognize everyday blessings and practice gratitude.

Thoughts to Make Your Heart Sing by Sally Lloyd-Jones

Short, inspiring devotions that help kids see God's love in every moment.

YOUTH NEWS

March Youth Calendar

In February, we celebrated love with a classic Valentine's Day party! We also discovered some new board games, including Hues and Cues, Trash Pandas, and Taco Vs. Burrito—and we highly recommend Hues and Cues! Plus, we started planning for our upcoming Fat Tuesday Pancake Dinner.

Stay connected and catch all the latest updates and photos by following us on Instagram @irvpresbyouth.

If you're in 6th-12th grade, we can't wait to see you at our upcoming activities!

March 2 5:30-7:30 Youth Group

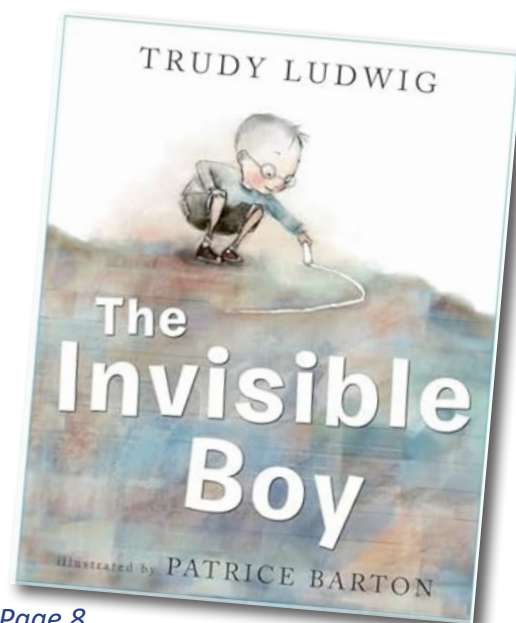
March 4th 6-7:30 Fat Tuesday Pancake Dinner Youth Group Fundraiser

March 9 5:30-7:30 Youth Group

March 16 5:30-7:30 Youth Group

March 23 NO Youth Group

March 30 5:30-7:30 Youth Group



Continued on Page 8

Continued from Page 7

Encourage Faith at Home

Talk It Out: Ask open-ended questions like, “How can we show love even when it’s hard?” or “Who might need our caring presence this week?”

Read Together: Choose a book from the list to spark conversations about kindness, empathy, and God’s unending love.

Pray Together: Thank God for constant love and ask for guidance to be a blessing to others, trusting that we are blessed in every season.

Thank you for partnering with us as we nurture our children’s faith. We look forward to seeing how these lessons shape hearts and inspire acts of love in our church and community!

Adult Education Class Recap: Exploring the Book of Revelation

In January our Adult Education series dove into the Book of Revelation, not as a doom-and-gloom forecast, but as a powerful source of hope and encouragement for believers living under pressure. We began with Week 1, where we uncovered Revelation’s historical context and learned how its apocalyptic style originally uplifted early Christians facing Roman oppression. Week 2 highlighted the rich symbols and imagery, like beasts and the Lamb as coded messages that critiqued unjust power and instilled resilience in believers. And we toured our IPC sanctuary discussing the images and significance embedded in our worship space. Finally, in Week 3, we focused on the ultimate vision of a New Heaven and a New Earth (Revelation 21–22), discovering how this eschatological hope calls us to active, compassionate engagement in our own communities right now.

Key Takeaways

Context Matters: Understanding Revelation’s first-century backdrop helps dispel common misconceptions and enriches our reading of this apocalyptic text.

Symbols Speak: Imagery such as the beasts, angels, and the Lamb underscored both a critique of oppressive empires and a message of steadfast hope.

Living Hope: The vision of renewal in Revelation 21–22 inspires us to join God’s ongoing work of healing by caring for creation, championing justice, and reflecting God’s inclusive love today.

If you’d like to go deeper, we recommend resources like *Reading Revelation Responsibly* by Michael J. Gorman or *Revelation for Everyone* by N.T. Wright.



Pancake

Dinner

Tuesday, March 4th

6:00-7:30 PM

\$\$ suggested donation per person

**Funds collected will
support IPC Youth Ministries**

WHY DOES IPC PAY TAXES?: HOW IPC PAYS ITS BILLS...

Just a few weeks ago, the 2025 Annual Budget was approved and began to be implemented. Unless you're on the Finance Committee or Session, you may not have noticed or known that IPC pays property taxes! It's true! How is this possible? Tax exemption seems to be one of those foundational tax concepts for Churches—the O.G. non-profits of America. Well, it's because IPC is among the leaders in the denomination using a unique method of paying its bills...

First: Yes, IPC has a property tax bill that it pays every year. It's not massive—around \$8600 in 2025—but it is large enough to cover the property tax for roughly 3 small properties. IPC owns the three duplexes that run along the east side of the primary parking lot (that side of the parking lot is legally known as Irving Court, according to the City). We rent these duplexes to individuals and receive income from them, therefore we must pay property tax for those units. That's right, IPC—through the work of the Board of Trustees—serves as the landlord to some of our neighbors! And those neighbors help fund IPC's annual budget. In 2024, after maintenance expenses and taxes were paid (which were relatively low in 2024), that income was roughly \$30,000. Not too bad, right? Income from renting our property and facilities, whether it be renting the duplexes (“the Doubles”), neighborhood organizations renting our facility, families using our building for funerals or weddings, or even the lease the Library holds. These are major sources of income: just over \$70,000 in 2025.

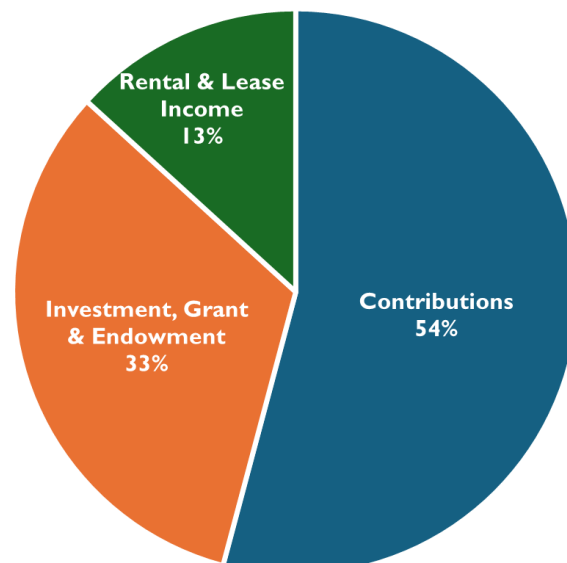
In fact, IPC could be considered a leader in the diversification of its income streams, when it comes to the way that churches support the programs and impact of its ministry. As can be seen in the pie graph, IPC's 2025 budget (much like years past) is primarily supported by various forms of financial contributions from each of you—and that will continue to be the primary source of our income without which we cannot dream of being the massive

institution that we are! The other portion of the budget, however, is made of things ministry leaders only dream of: earned income and investment income.

IPC has been very blessed by leaders in our past who anticipated that, much like Joseph who was managing the Egyptian Pharaoh's wealth during seven years of plenty in anticipation of seven years of famine, our wealth a generation or two ago would be integral to our survival in days like today. They established the IPC Endowment, who provides annual gifts and special support to the ministry of our church every year, out of the profits from those investments. Several very generous gifts were also established by members upon their passing that have provided the resources to fund our Christian Education and Communications staff positions (both of which will be depleted by 2026). The income from our investment account has provided a safety net and significant source of income as well (e.g. in 2023, our investments generated \$10,000 in gains; in 2024, gains of \$95,000!).

IPC has been so very, very blessed over the years, permitting us to budget in the manner that we do, but those blessings are present because of careful

2025 Budgeted Income Sources



Continued from Page 9

management and stewardship. IPC is at a point where we have consistently been over-spending our income (budgeted deficits have been approved for several years now) and Session has been carefully watching how our spending has impacted our investment balance with an eye on how that affects our collective impact. That is a difficult balance to strike, especially when each of us is so involved in and impacted by any changes we make to the life of our beloved family of faith.

All this is to say: Our involvement and participation in the life of this church and community is what

drives our ministry and mission. We will continue to serve as Christ has called us to serve; and where there is need or energy or growth, we will be very intentional about supporting! And you know as well as I, that this community will use every gift to have the biggest impact possible, especially when it comes to helping those in physical, emotional, or spiritual need find support. Your continued support and participation drive our ability to serve and to do that work. So, continue to join us, but also invite others to join us too! There is a lot here to celebrate and even more ways to serve and grow!



everything [in] between



everything
[in] between
intention & action

Ash Wednesday
March 5th



everything
[in] between
stranger & neighbor

First Sunday of Lent
March 9th



everything
[in] between
faith & works

Second Sunday of Lent
March 16th



everything
[in] between
rest & growth

Third Sunday of Lent
March 23rd



everything
[in] between
lost & found

Fourth Sunday of Lent
March 30th



everything
[in] between
righteousness & mercy

Fifth Sunday of Lent
April 6th



everything
[in] between
shouting & silence

Palm Sunday
April 13th



everything
[in] between
power & humility

Maundy Thursday
April 17th



everything
[in] between
grief & hope

Easter Sunday
April 20th

Continued from Page 6

Irvington Presbyterian Church includes ICAN and IAM in our annual mission budget, as we have been and continue to be a key financial, volunteer, and overall proponent and supporter of IAM and ICAN's work in Irvington. In addition to our budgeted financial support, we often have fundraisers or collect supplies for the work of ICAN. You are welcome to give financial gifts above and beyond your regular offerings by simply marking the gift's intent (i.e. "ICAN") in the memo or comments line.

Another way you can support ICAN is by bringing a non-perishable food item or hygiene product with to worship on the THIRD Sunday of the month. Every THIRD Sunday, during Sacred Space, the children will collect those items from everyone in their pews and bring them forward so we can bless them, celebrate them, and increase our awareness of the impact and ministry of ICAN. What fun, right?

And if you're the type that would rather do something with your hands, or interact with some of our neighbors in need, the food pantry at Downey Avenue Christian Church is always excited to welcome new volunteers. Check it out on Thursdays after 12 pm and they will find you a spot to help out for their weekly pantry hours which are from 1-3 pm.

Finally, don't forget to join the Irvington Association of Ministers on Wednesdays during Lent! We visit various congregations to share in a soup dinner, find fellowship amongst our neighbors and neighboring churches, and come together for a short service of worship. IPC hosts on Wednesday, March 12, so watch for opportunities to help us be hospitable neighbors that evening!

These services include an offering for ICAN and, collectively, provide a major source of support—through financial gifts, but also increased awareness and moral support—every year. We hope you'll join us!

In fact, we hope you'll join us in the ministry of IAM and ICAN: joining together to serve, support, and celebrate our collective ministry and unique ministries for God's glory and for the love of our neighbor!

THE IRVINGTON ASSOCIATION OF MINISTERS'

wednesday lenten services

weekly @ 6:00 PM

-  **@ IRVINGTON PRESBYTERIAN CHURCH**
55 JOHNSON AVE, INDIANAPOLIS, IN 46219
PREACHING: REV. SUNIL KOTIAN, IUMC
-  **@ IRVINGTON UNITED METHODIST CHURCH**
30 N AUDUBON RD, INDIANAPOLIS, IN 46219
PREACHING: REV. ADAM BRADLEY, DACC
-  **@ GETHSEMANE LUTHERAN CHURCH**
6810 E 10TH ST, INDIANAPOLIS, IN 46219
PREACHING: REV. MAUREEN WILSON, IPC
-  **@ DOWNEY AVENUE CHRISTIAN CHURCH**
111 S DOWNEY AVE, INDIANAPOLIS, IN 46219
PREACHING: FR. RICK GINTHER, OLL
-  **@ OUR LADY OF LOURDES CATHOLIC PARISH**
5333 E WASHINGTON ST, INDIANAPOLIS, IN 46219

Join us!

food.  **for a warm soup meal,**

fellowship.  **to break bread with someone new, and**

faith.  **in worship as many parts of Christ's one body**

Gifts and offerings from worship will support



the Irvington Community Advocacy Network
A ministry of the Irvington Association of Ministers

SEAL

SEAL

Irvington Presbyterian Church

The Presbyterian Church (U.S.A.)

55 Johnson Ave.

Indianapolis, IN 46219-6498

Address Service Requested

Non-Profit Org.
U.S. Postage
PAID
Indianapolis, IN
PERMIT No. 2953

LABEL HERE

JACK'S O R N E R

LOVE CAN COME IN MANY DIFFERENT WAYS

I found an article in Reader's Digest which comes to mind. The Dogwood Animal Rescue found a puppy that was nearly

blind with chronic eye pain. Their idea is to get the rescued animals adopted. This puppy, named "Shelby", went through four surgeries and they knew she was theirs. Shelby is a Great Dane, and it was found that she had a gift for comforting their ever-changing sick and injured animals. The shelter realized that terrified dogs or kittens had no problem socializing if they were with Shelby. One time they took in a bulldog puppy that wasn't expected to live. He weighed only one pound but with the

125-pound Shelby by his side, he got stronger and survived. There are many stories about how Shelby came to the rescue with her caring and love at this rescue shelter. She has also been an infallible source of comfort to the animal rescuers.

