

## YOUNG CHILDREN

The nursery is open at 9 a.m. until the end of worship and is available for parents to care for their children at anytime Toddlers, or those in Preschool, Kindergarten, and grades 1-5 begin in worship with their families, then may leave for their classes after Sacred Space.  
**Toddler/Preschool:** Hannah Braun

## CALENDAR

(View the monthly calendar at [irvpresby.org](http://irvpresby.org))

### Sunday, April 12

10:00 a.m. Worship in-person and online  
 11:00 a.m. Fellowship Hour, FH  
 12:30 p.m. El Trono Sunday School, FH  
 2:00 p.m. El Trono Worship, FH  
 2:00 p.m. El Trono, Nursery  
 5:30 p.m. Youth Group, 3<sup>rd</sup> Flr. Youth Room

### Monday, April 13

8:00 p.m. AA Group, FH

### Tuesday, April 14

1:00 p.m. Alzheimer's Support Group, Parlor  
 6:30 p.m. IAC Choir Practice, Choir Rm.  
 6:30 p.m. #57 PTSA Meeting, Rm. 24 and Rambler Rm.  
 7:00 p.m. El Trono Women's Group, Rm. 25

### Wednesday, April 15

10:00 a.m. Men's Bible Study, Parlor  
 6:00 p.m. El Trono Children, 2nd and 3rd Flr.  
 6:00 p.m. El Trono Worship/Bible Study, FH  
 7:00 p.m. Trustee Meeting, Parlor

### Thursday, April 16

10:30 a.m. Women's Bible Study, Parlor (lunch after at Jockamos)  
 6:30 p.m. Bell Choir Practice, Choir Rm.  
 7:30 p.m. Choir Rehearsal, Sanctuary

### Friday, April 17

10:00 a.m. Bridge Club, Fellowship Hall  
 6:00 p.m. El Trono Band Practice, FH  
 6:00 p.m. El Trono Hebreo Dance Class, Rambler Room

### Saturday, April 18

11:00 a.m. Knitting/Crafting Group, Parlor (all are welcome!)  
 7:30 p.m. Safe Harbor, Owens hosting- play at the Epilogue Players Theater, seeing The Tin Women  
 6:00 p.m. El Trono Prayer Service, FH

### Sunday, April 19

10:00 a.m. Worship in-person and online  
 11:00 a.m. Fellowship Hour, FH  
 12:30 p.m. El Trono Sunday School, FH  
 2:00 p.m. El Trono Worship, FH  
 2:00 p.m. El Trono, Nursery  
 4:00 p.m. Girl Scouts, 3<sup>rd</sup> Flr.  
 5:30 p.m. Youth Group, 3<sup>rd</sup> Flr. Youth Room

## WORSHIP PARTICIPANTS

### Liturgist

<b>Beadle</b>	<b>Matt Harris</b>
<b>Ushers: West Door</b>	<b>Jamie Ludwig</b>
<b>Center Aisle</b>	<b>Donna Tindall</b>
<b>Greeter</b>	<b>Mathew Akoko</b>
<b>Balcony</b>	<b>Diane Roudebush</b>
<b>East Door</b>	<b>Edrisa Camara</b>
<b>Head Usher</b>	<b>Erika Hinshaw</b>
<b>Fellowship Hour</b>	<b>Women's Bible Study Group</b>
<b>Flower Delivery</b>	<b>David and Louise Owen</b>
<b>Bus Driver</b>	<i>Bus is being repaired</i>
<b>IPC Clippers</b>	<b>Tim and Kristin Swick</b>
<b>Parking Lot Security</b>	<b>Jack Simpson</b>

### STAFF

<b>Pastor &amp; Head of Staff</b>	<b>The Rev. Dr. Jonathan H. Reimink</b>
<b>Pastor Emeritus</b>	<b>The Rev. Robert A. Heimach</b>
<b>Parish Associate</b>	<b>The Rev. Elizabeth Kaznak-Hall</b>
<b>Parish Associate</b>	<b>The Rev. Robert B. McAulay, Jr.</b>
<b>Administrator</b>	<b>Lori Chapman</b>
<b>Director of Communications &amp; Community Engagement</b>	<b>Craig Shaw</b>
<b>Director of Youth &amp; Children's Faith Formation</b>	<b>Joshua Barrett</b>
<b>Director of Music</b>	<b>Doug Shafer-Johnson</b>
<b>Organist</b>	<b>Luke Kessler</b>
<b>Strategist for Aging Well</b>	<b>Denise Harrington</b>
<b>Sexton (Custodian)</b>	<b>Joe Dial</b>
<b>Treasurer</b>	<b>James Young</b>
<b>Director of Music Emerita</b>	<b>Grace Long</b>
<b>Director of Roots &amp; Wings Child Care</b>	<b>Ariel Lewis</b> <a href="mailto:rootsandwings@irvpresby.org">rootsandwings@irvpresby.org</a>
<b>Founding Executive &amp; Artistic Director of IRVINGTON ARTS COLLECTIVE</b>	<b>Dr. Webb Parker</b> <a href="mailto:iac@irvarts.org">iac@irvarts.org</a>

55 Johnson Avenue, Indianapolis, IN 46219  
 (317) 356-7225 | [irvpresby.org](http://irvpresby.org)

Office Hours: Monday - Friday 9:00 a.m. - 4:00 p.m.

Worship with us! Join live or watch later on our website or on:


 /IrvingtonPresbyterian  
 /IrvingtonPresbyterianChurch



*Der ungläubige Thomas / The Incredulity of Thomas* (1601) by Michelangelo Merisi da Caravaggio (1571-1610). Oil on Canvas. Sanssouci Palace, Germany. Public Domain.

**Second Sunday of Easter**  
**April 12, 2026**  
**10:00 AM**

*“Called to be an inclusive church that lives by faith, is known by God's love, and gives hope a voice in our neighborhood and world.”*

 **IF YOU RECEIVE ANY EMAILS OR TEXT MESSAGES** from the church staff asking for gift cards, cash, or anything out of the ordinary, please contact the church office before you reply to such requests.

ORDER FOR SERVICE OF WORSHIP  
**SECOND SUNDAY OF EASTER**  
**APRIL 12, 2026**

Help us stay connected and know you worshiped with us!  
Please sign the **red Ritual of Friendship pad** in your pew near the center aisle.

\*Please stand in body or in spirit.

**GATHERING**

GREETING

Rev. Dr. Jonathan Reinink

ANTHEM

**LISTENING FOR THE WORD**

*I'm Gonna Live so God Can Use Me*  
Doug Shafer-Johnson, vocalist and pianist

TRADITIONAL SPIRITUAL

PRELUDE

SCRIPTURE

*John 20:19-31*

Pew Bible pg. 115

This is the Word of the Lord. **Thanks be to God.**

SERMON

*Witnessing the Wounds of the Risen*

Rev. Dr. Reinink

**RESPONDING TO THE WORD**

\*AFFIRMATION OF FAITH *The Apostles' Creed (Unison)*

**I believe in God, the Father Almighty, Maker of heaven and earth,  
And in Jesus Christ, his only Son, our Lord;  
who was conceived by the Holy Ghost, born of the Virgin Mary,  
suffered under Pontius Pilate, was crucified, dead, and buried;  
he descended into hell; the third day he rose again from the dead;  
he ascended into heaven,  
and sitteth on the right hand of God, the Father Almighty;  
from thence He shall come to judge the quick and the dead.  
I believe in the Holy Ghost; the holy catholic church;  
the communion of saints; the forgiveness of sins;  
the resurrection of the body; and the life everlasting. Amen.**

\*HYMN #817

*We Walk by Faith and Not by Sight*

DUNLAP'S CREEK

PRAYERS OF THE PEOPLE & THE LORD'S PRAYER

**Our Father who art in heaven, hallowed be thy name.  
Thy kingdom come, thy will be done, on earth as it is in heaven.  
Give us this day our daily bread;  
and forgive us our debts, as we forgive our debtors;  
and lead us not into temptation, but deliver us from evil.  
For thine is the kingdom and the power and the glory, forever. Amen.**

CALL TO OFFERING

OFFERTORY

\*DOXOLOGY (#606)

\*OFFERTORY PRAYER

**SENT OUT TO SERVE**

\*HYMN #804

*Rejoice, Ye Pure in Heart!*

MARION

\*BENEDICTION

Rev. Dr. Reinink

POSTLUDE

**CONGREGATIONAL INFORMATION**

**Welcome to Irvington Presbyterian Church!**

It is our prayer that you would find this to be a place where you can connect with God and God's family in worship and fellowship.

**If you are new here**, please tell the pastor or an usher after worship so we can connect with you and share more about our community of faith. **And join us for a time of Fellowship** after worship in Fellowship Hall—directly below the Sanctuary. We're excited to have you with us today!

**IN CASE OF EMERGENCY** the cabinet with a **RED CROSS** in the rear of the Sanctuary contains supplies including: Naloxone (**NARCAN®**), a First Aid Kit, and an AED Defibrillator.



**Worship attendance on Sunday, April 5**

9AM 115 in-person and 14 online; 11AM 105 in-person and 7 online



**SOUL FOOD PROJECT**

URBAN FARM

**RESCHEDULED!**

**LIFT**

**Monday, April 20<sup>th</sup>**  
**6:30 pm | IPC Parlor**

L.I.F.T. invites everyone to the Parlor on April 20th to learn about the Indianapolis Soul Food Project's mission of building sustainable urban agricultural spaces and educating the community through demonstration, producing high-quality food, and fun.



Amber Quinn  
Public Ally/Farm Outreach  
Coordinator of Soul Food Project

Bring a friend along with a snack to share as we explore improving our own garden spaces and how to engage with this fantastic community resource!

**GIVE ONLINE**

Follow the links on our website—[irvpresby.org](http://irvpresby.org)—or scan this QR code with the camera on your mobile device to make a gift.



Not everything fits in the Offering Plate! Use the *My Offering* cards in the pew rack to acknowledge your participation in dedicating gifts of talent, time or treasure.



**THE FLOWERS** this morning are offered to the glory of God in memory and honor of family, given by the family of Helen Hunt.

**THIS WEEK IN PRAYER WE WILL REMEMBER...**

Red Anderson, Faith Ministries in Reynosa Mexico, Annetta Huffman, Gwen Mann, Rod Oller, Avery Paauwe, Diane Pflanzner, Nancy Pierce, Phil Reed, Kathy Stroud, Caroline Thompson, Kendall Traylor, Bill Voiles, Larimore Wickett, Melissa Melvin-Wicksall, Angela Valadez, Joan and Otto Woerdehoff.

**CONFIRMATION CLASS**

**HOW TO SPELL "PRESBYTERIAN" FOR YOUTH**

Where ARE all the bathrooms?

Do church services have "minimum requirements"?

Why do we believe "in the catholic church"?

What are all these acronyms?  
PCUSA, PMA, SO, WVP, SoL, COM, NT/OT, GA, Per Capita

When did we get so "liberal?"

Why are we so conservative?

Baptism: drip vs. dunk, and adult vs. infant

Tell me why I'm Predestined to be Presbyterian...

How did we get from Jesus and the disciples to Pope Leo & Pastor Jon?

**CONFIRMATION CLASSES begin this month!**  
Contact Pastor Jon if you need details

### 2026 Safe Harbor

If you're interested in joining, please contact Pat Lewis at pmclewis@yahoo.com or David Owen at davidDPU81@yahoo.com.

- April 17 or 18: Attend a play (TBD), hosted by Owen
- May 16: Pitch-in and games, hosted by Lewis

Everyone is welcome to join us at any of our upcoming 2026 events. Our activities usually take place on the third Saturday of each month unless otherwise noted. Upcoming events include duckpin bowling, attending a hockey game, and going to a play.

Thanks,  
David Owen

**Horizon House needs** bandage strips, gauze pads or rolls, medical tape, antiseptic wipes or spray, and antibiotic ointment for wound care, along with toothpaste and toothbrushes. If you are able to donate any of these items, please place them in the bin outside the parlor. Kindly label them Horizon House.  
Jackie Cox

# APRIL BIRTHDAYS

Barbara Broadlick	04/01
David Hansen	04/01
Nancy Farmer	04/03
Caroline Thompson	04/04
Betsy Laslie	04/08
Erika Hinshaw	04/09
Jane Gough	04/11
Melitta Payne	04/13
Robert Heimach	04/13
Jean Anne Hedelius	04/20
Adilynn Traylor	04/21
Nolan Lewis	04/22
Eric Lewis	04/23
Martha McDonald	04/23
Julie Pittman	04/24
Christopher Traylor	04/25
John Holmes	04/26
Emma Holzhausen	04/26
Robert Lewis	04/26
Jackie Cox	04/28
Sophia Merida	04/29
Zachary Giddens	04/30

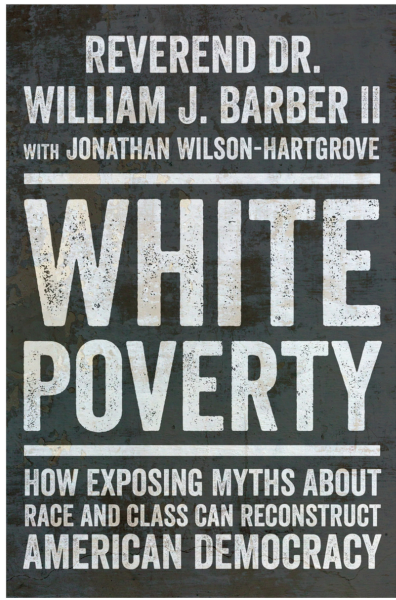
*April Birthdays*

**TODAY**, in Fellowship Hall following worship, we will celebrate all April birthdays! We will have cake and other goodies! If we have omitted anyone's birthday, it may not be recorded in the church office. You can email Lori at lchapman@irvpresby.org to inform her of your birthdate.

### U40? ...ish?

Millennials, Gen Z, (even you young-at-heart Gen Xers!), we know you're there and we see you!  
Text your name to Pastor Jon to get added to the list for some upcoming connection activities:  
(317) 352-7657.

The Justice Advocates of Irvington Presbyterian Church & the Irvington Branch of the Indianapolis Public Library invite the community to be part of a



## Community Book Read and Discussion

on Rev. Dr. William Barber and Jonathan Wilson-Hartgrove's

*White Poverty: How Exposing the Myths About Race and Class Can Reconstruct American Democracy*

Tuesday, May 12 and Tuesday, May 19  
6:30 - 8:00 p.m.

at the Irvington Branch of  
The Indianapolis Public Library

*\*\*Limited copies of the book are available at the Irvington Presbyterian Church office and at the Irvington library branch. White Poverty is also available as an ebook, audio book, or in print through the library.*

# Spring Word Search



BLOSSOM	PICNIC	MARCH	BUTTERFLY	PETALS
SUNSHINE	SPROUT	APRIL	LADYBUG	CHIRP
RAINBOW	GARDEN	MAY	FRESH	SEEDS
BLOOM	BUNNY	SHOWERS	PUDDLE	UMBRELLA
TULIP	NEST	GREEN	BUZZING	FLOWERS
DAFFODIL				



*Thank you to all who helped with the Easter breakfast pitch-in! It was wonderful!*

*H & E committee*

Save the date!  
Sunday, May 17th  
Youth Sunday &  
Mac & Cheese Cook-Off  
Camp Scholarship  
Fundraiser



Thank you to all who helped at our Trustee Work Day yesterday!

# 240 Alleluia, Alleluia! Give Thanks

Descant

Al - le - lu - ia, al - le - lu - ia,

*Refrain* E C#m F#m B

Al - le - lu - ia, al - le - lu - ia! Give thanks to the ris - en Lord. Al - le -

al - le - lu - ia! Praise to his name.

E C#m F#m B E

lu - ia, al - le - lu - ia! Give praise to his name.

E C#m F#m B

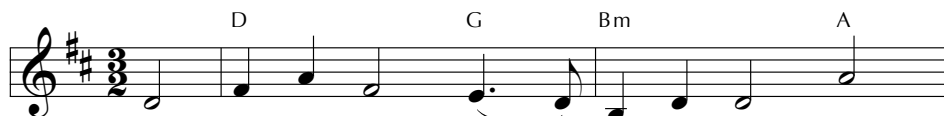
- 1 Je - sus is Lord of all the earth.
- 2 Spread the good news o'er all the earth:
- 3 We have been cru - ci - fied with Christ.
- 4 Come let us praise the liv - ing God,

E C#m F#m B *to Refrain*

He is the King of cre - a - tion.  
 Je - sus has died and has ris - en.  
 Now we shall live for - ev - er.  
 joy - ful - ly sing to our Sav - ior.

This text and tune were created together in the context of an ecumenical, charismatic, missionary Christian community in Ann Arbor, Michigan. Their energy and emphasis center in the opening and closing refrain's "Alleluia"—the essential Easter word of proclamation.

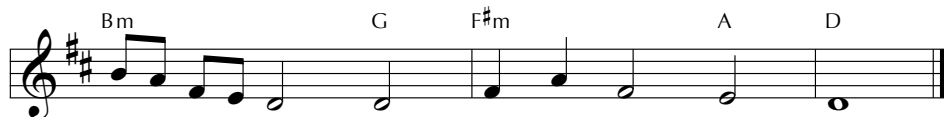
## 817 We Walk by Faith and Not by Sight



1 We walk by faith and not by sight; with  
 2 We may not touch your hands and side, nor  
 3 Help then, O Lord, our un - be - lief; and  
 4 And when our life of faith is done, in



gra - cious words draw near, O Christ, who spoke as  
 fol - low where you trod; but in your prom - ise  
 may our faith a - bound to call on you when  
 realms of clear - er light may we be - hold you



none e'er spoke: "My peace be with you here."  
 we re - joice and cry, "My Lord and God!"  
 you are near and seek where you are found.  
 as you are, with full and end - less sight.

*Guitar chords do not correspond with keyboard harmony.*

The opening line here is essentially a quotation of 2 Corinthians 5:7, but that affirmation is fleshed out by references to the appearance of the risen Christ to Thomas (John 20:19–29). The shape note tune, named for a stream in Fayette County, Pennsylvania, adds resolution to the words.

## 804 Rejoice, Ye Pure in Heart!

1 Re - joyce, ye pure in heart! Re - joyce, give thanks, and sing!  
 2 With voice as full and strong as o - cean's surg - ing praise,  
 3 Yes, on through life's long path, still chant - ing as ye go,  
 4 At last the march shall end; the wea - ried ones shall rest;  
 5 Then on, ye pure in heart! Re - joyce, give thanks, and sing!

Your fes - tal ban - ner wave on high, the cross of Christ your King.  
 send forth the stur - dy hymns of old, the psalms of an - cient days.  
 from youth to age, by night and day, in glad - ness and in woe:  
 the pil - grims find their home at last, Je - ru - sa - lem the blest.  
 Your fes - tal ban - ner wave on high, the cross of Christ your King.

*Refrain*

Re - joyce! Re - joyce! Re - joyce, give thanks, and sing!  
 Re - joyce! Re - joyce!

These stanzas are drawn from a much longer hymn created for the processional at an English choir festival in 1865. The original text lacked the refrain that gives the hymn so much of its energy and interest. That feature was added by the composer of this tune in 1883.